

# Serial Datalogger to microSD

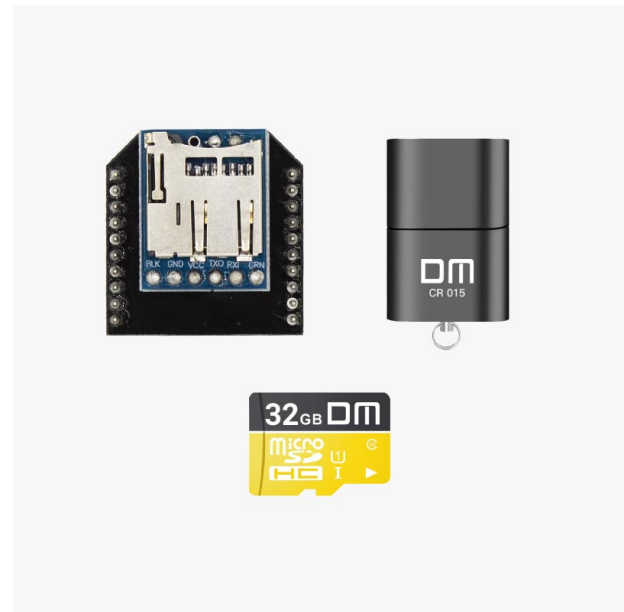
Includes:

- Pre-configured at 115'200bps Serial Datalogger to microSD card (XBee socket compatible)
- 32GB class 10 microSD card
- microSD card to USB reader

Image not found or type unknown



More info about the product!



Serial Datalogger to microSD SKU is: AS-XBEE-LOG-MICROSD-01

Get a discounted bulk price on this product for orders of 50 units or more. Contact us at [info@ardusimple.com](mailto:info@ardusimple.com) to get a quote.

## Description

With ArduSimple Serial Datalogger, you will be able to store GPS data in a very simple way. Ideal for PPK, RTK and standalone applications.

Just configure the data you want to store at 115'200bps in the UART connected to the XBee socket. For example, this allows you to record GGA only at 100Hz

Good to know:

- It supports microSD cards up to 32GB (included)
- This product is compatible with all ArduSimple boards.
- This product is compatible with [simpleRTK2B case](#) but NOT with simpleRTK2Blite case.

Product Change History:

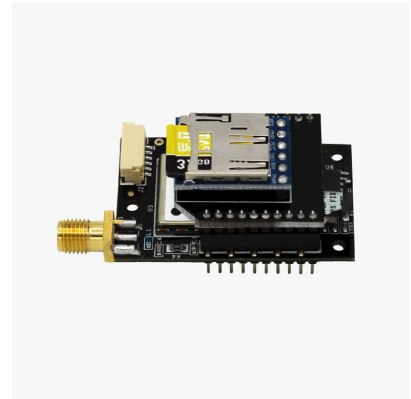
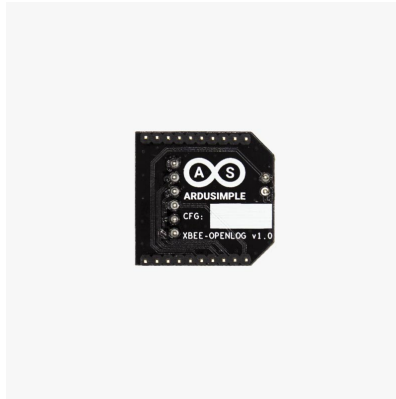
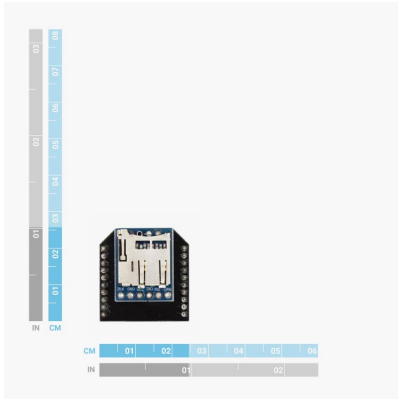
- AS-XBEE-LOG-MICROSD-00: initial version recording up to 57'600bps, pre-configured at 57'600bps
- AS-XBEE-LOG-MICROSD-01: baudrate increased to 115'200bps, pre-configured at 115'200bps

## Specifications

### Hardware features:

- Voltage supply: 2.7-3.6V
- Default baudrate: 115'200bps
- Maximum SD card size: 32GB

## Image Gallery



Serial Datalogger to microSD includes free basic technical support. Contact [info@ardusimple.com](mailto:info@ardusimple.com) for more information.

Data and descriptions in this document are subject to change without notice. Product photos and pictures are for illustration purposes only and may differ from the real product appearance.