

Shield for C099-F9P

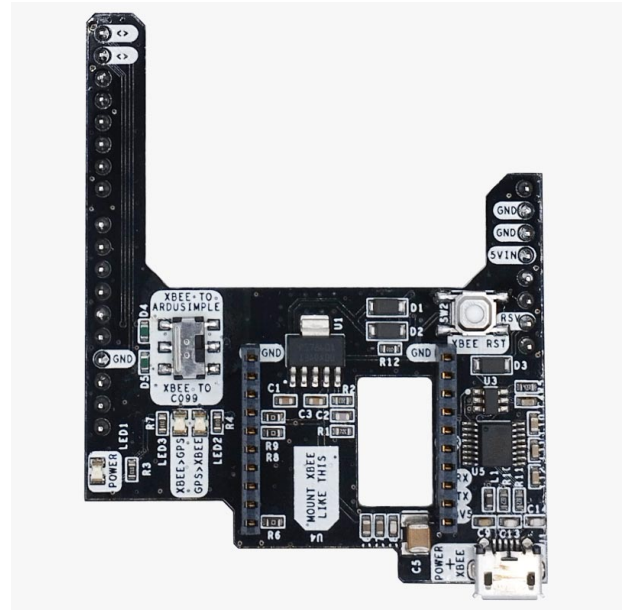
Includes:

- 1x Shield for C099-F9P

Image not found or type unknown



[More info about the product!](#)



Shield for C099-F9P SKU is: AS-ADP-C099-TO-XBEEHP-00

Get a discounted bulk price on this product for orders of 50 units or more. Contact us at info@ardusimple.com to get a quote.

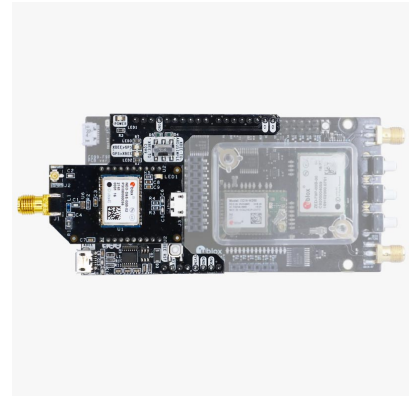
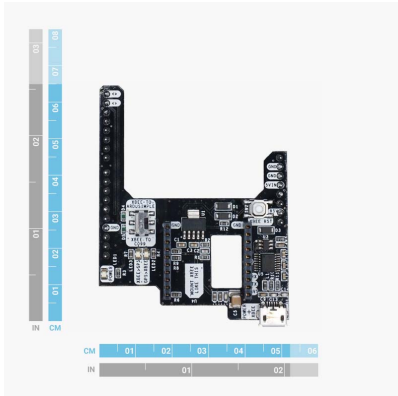
Description

With the ArduSimple Shield for C099-F9P you will be able to add any ArduSimple plugin to your u-blox C099-F9P board. Make sure the switch is moved towards "XBEE TO C099".

The Shield is connecting the UART TX/RX of the XBee device mounted on it, to the J9 connector of C099-F9P, pins 1 (RXD_ZED_ARD) and 2 (TXD ZED). This means:

- The RX of the Shield goes to ZED-F9P TX1.
- The TX of the Shield goes to a multiplexer, which can be connected directly to ZED-F9P RX1.

Image Gallery



Shield for C099-F9P includes free basic technical support. Contact info@ardusimple.com for more information.

Data and descriptions in this document are subject to change without notice. Product photos and pictures are for illustration purposes only and may differ from the real product appearance.